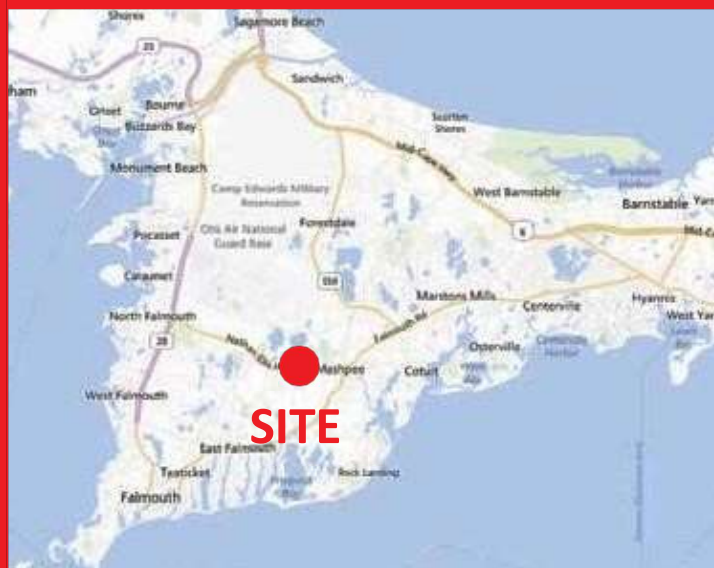


FOR SALE 3.04 Acres on Route 151

211 Nathan Ellis Hwy., Mashpee, MA 02649



LAND FOR SALE 3.04 ACRES

Zoning: R5
 ADT Route 151 : 17,505

TRADE AREA DEMOGRAPHICS

Radius	Population	Med. HH Income
3 miles	13,883	\$60,714
5 miles	38,021	\$63,963



Mark Sobel
msobel@1stusrealty.com
 508.280.4563
 508.591.3000

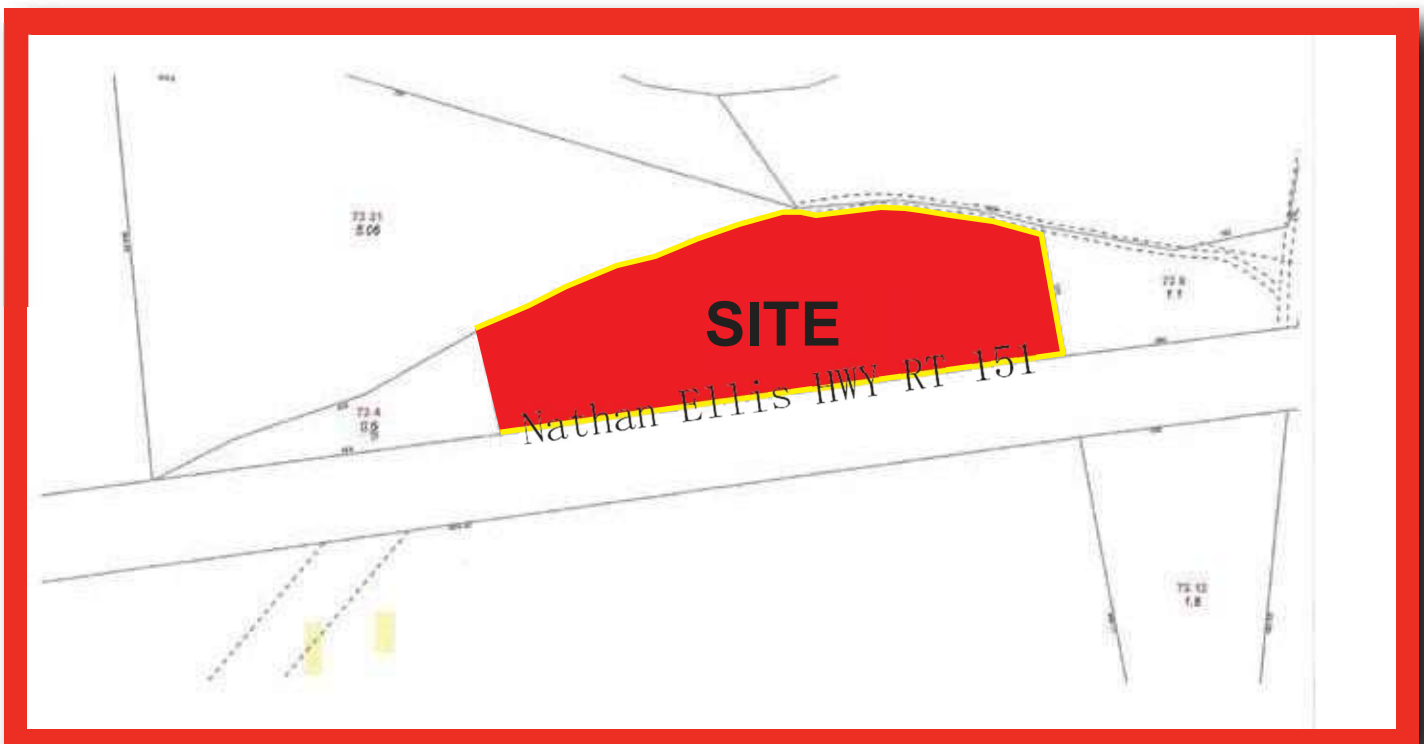
www.1stusrealty.com

FOR SALE 3.04 Acres on Route 151

211 Nathan Ellis Hwy., Mashpee, MA 02649



1st U S Realty presents an unusual opportunity: 3.04 acres of undeveloped land on Route 151 in Mashpee, close to the dynamic heart of retail activity in that section of the Cape. Located ½ mile west of the Mashpee traffic circle and close to Mashpee Commons, the site has +/- 700 linear feet of frontage on Route 151. For the right party/opportunity, this undeveloped land has excellent potential.



All information furnished is from sources deemed reliable but no warranty of representation is made as to the accuracy thereof and information is submitted subject to errors, omissions, change of price, rental or other conditions, prior sale or lease, or withdrawal without notice. Inquiring parties should make judge- ments and decisions based solely on their own due diligence.



Mark Sobel
msobel@1stusrealty.com
508.280.4563
508.591.3000

www.1stusrealty.com